

Operation guide



TYPE	RPP	RPP-A	RZP	RZP-A
	2-jaw parallel gripper		3-jaw centric gripper	
Gripping force	208 - 21900 N	240 - 3450 N	650 - 38000 N	700 - 16500 N
Stroke per jaw	2 - 45 mm	2 - 16 mm	3 - 35 mm	3 - 16 mm
Gripping type				
Clamping type				
Gripping force safety device				
Actuation	 optional	 optional		
Page	5006	5028	5046	5064

Operation guide

hydraulic actuated

external gripping

parallel gripping

pneumatical actuated

internal gripping

centric gripping

Operation guide



TYPE	RGP	RGPO	RPR	RRMG / RRMG-MRK
	2-jaw long stroke gripper			Synthetic gripper
Gripping force	630 - 2950 N	1250 - 3000 N	260 - 1100 N	80 - 150 N
Stroke per jaw	30 - 50 mm	60 - 100 mm	14 - 28 mm	2,6 - 4,3 mm
Gripping type				
Clamping type				
Gripping force safety device			-	Optional
Actuation		optional		
Page	5080	5090	5098	5102

Operation guide

gripping force safety device external gripping

gripping force safety device internal gripping



NOMENCLATURE

RZP

RÖHM
Z centric gripper
Pneumatic

-A

A = Alternative
jaw fixture by
tongue and
groove

- 100

Sizes
64 - 300

-1

Jaw stroke variant
1 = long stroke
2 = short stroke

/ GA

Optional:
spring safety
GA = outside grip
GI = inside grip

/ V

Optional:
V = Viton FKM-
sealing for
temperatures
up to 150 °C

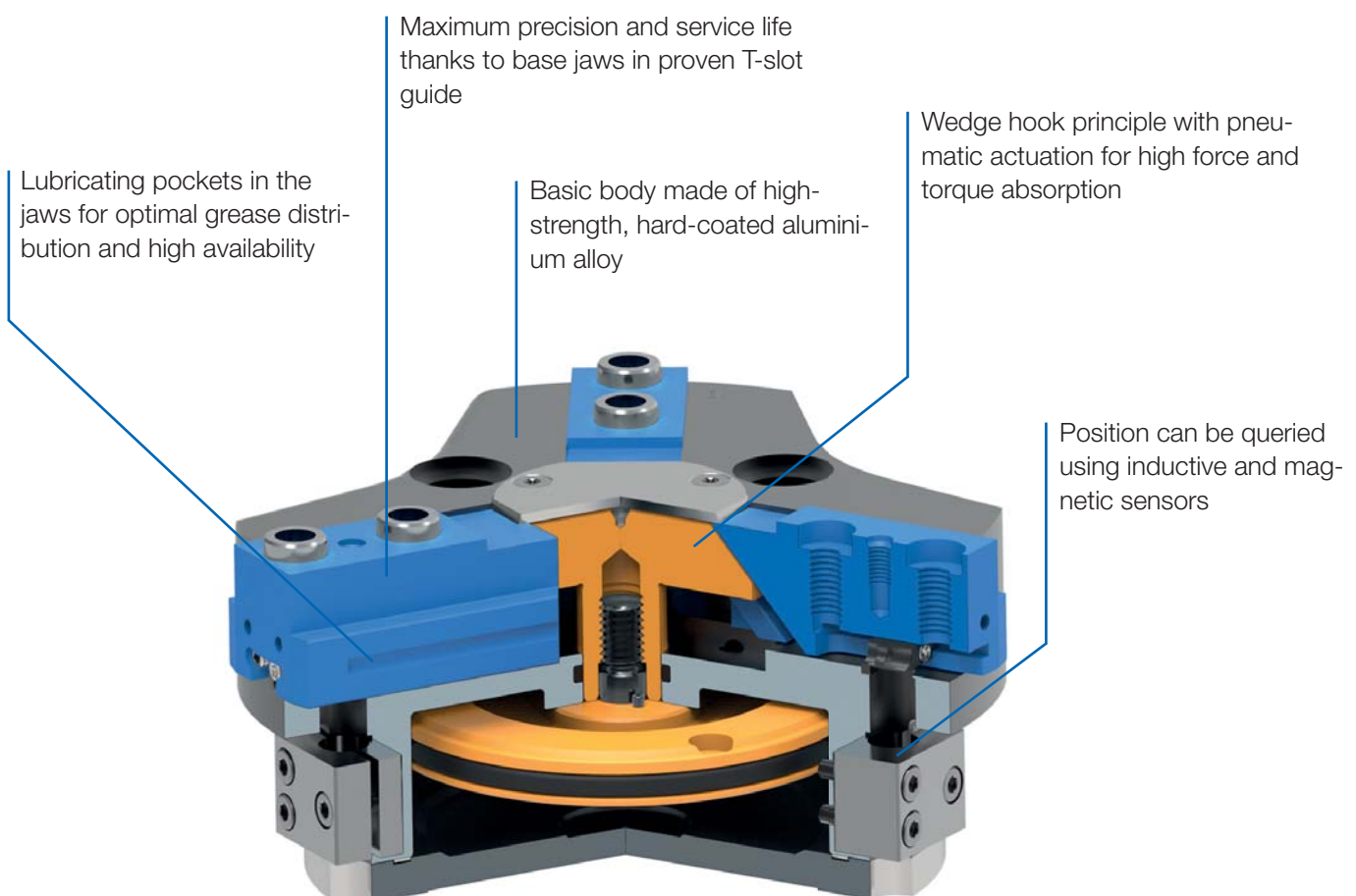


3-JAW CENTRIC GRIPPER

Equipped with three centrally arranged gripper fingers, RÖHM RZP grippers are optimally suited for universal and self-centering gripping of round workpieces. Especially on robots or portals, the 3-jaw centric grippers will convince with their compact design, low dead weight and high gripping force.

ADVANTAGES AT A GLANCE

- ⊕ High gripping force with low dead weight and compact design
- ⊕ Maximum flexibility thanks to versatile connection and fastening options
- ⊕ Long service life and high reliability thanks to specially ground base jaws in proven T-slot guide





3-jaw centric gripper

RZP-64



APPLICATION

Universal gripping of round and cylindrical workpieces with three centrally arranged gripper fingers for handling with robots or portals.

TYPE

Available from sizes 64 to 300, each in two stroke variants. Optionally with gripping force safety device and/or dirt cover.
Fastening of the gripper fingers via centering sleeves (included in the scope of delivery).

CUSTOMER BENEFITS

- ⊕ High gripping force with low dead weight and compact design
- ⊕ High torque support for using long gripper fingers thanks to elongated jaw guide
- ⊕ Maximum flexibility thanks to versatile connection and fastening options
- ⊕ Long service life and high reliability thanks to specially ground base jaws in proven T-slot guide

TECHNICAL FEATURES

- Centrally clamping in compact design made of high-strength, hard-coated aluminium alloy
- All functional parts made of hardened steel for maximum service life
- Wedge hook principle with pneumatic actuation
- Optional inductive and magnetic position sensors
- Optionally available with FKM seals for higher temperatures up to 150°C (on request)
- Integrable purge air connection to prevent contamination



C40
RZP-64 - 3-jaw centric gripper air operated

Item No.	170050	170051 ▲	170052	170053 ▲	170054	170055 ▲
Design	RZP-64/3-1	RZP-64/3-2	RZP-64/3-1 GA	RZP-64/3-2 GA	RZP-64/3-1 GI	RZP-64/3-2 GI
Gripping force at 6 bar N	650	1200	850	1600	900	1700
Stroke per jaw mm	6	3	6	3	6	3
Gripping force maintained N	-	-	200	400	200	400
Recommended workpiece weight kg	3,2	6	3,2	6	3,2	6
Weight kg	0,45	0,45	0,55	0,55	0,55	0,55
Height mm	43,3	43,3	56,8	56,8	56,8	56,8
Ø mm	76	76	76	76	76	76
Mx Nm	40	40	40	40	40	40
My Nm	60	60	60	60	60	60
Mz Nm	40	40	40	40	40	40
Fz N	1100	1100	1100	1100	1100	1100
Operating pressure min./max. without GA/GI bar	2-8	2-8	-	-	-	-
Operating pressure min./max. with GA/GI bar	-	-	4-7	4-7	4-7	4-7
Clamping time s	0,03	0,03	0,02	0,02	0,04	0,04
Opening time s	0,03	0,03	0,04	0,04	0,02	0,02
Air consumption per cycle cm ³	25	25	25	25	25	25
Max. allowable length of jaw mm	90	85	85	80	85	80

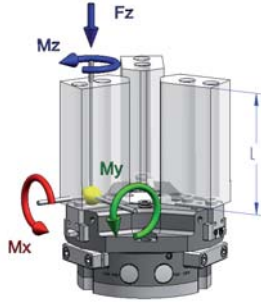
Centric gripper RZP



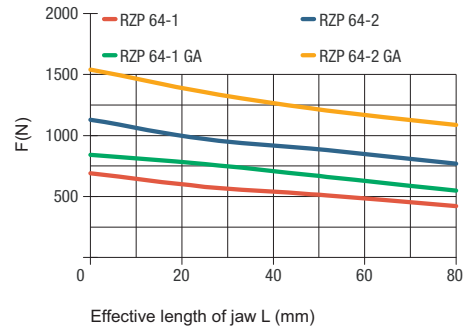
3-jaw centric gripper

RZP-64

Max. load on gripper and jaw



Total gripping force F(N) at 6 bar



3 x Borehole for resilient pressure piece
Ø 7 H8

RZP 64/3-1 MAX. 40,5; MIN. 34,5
RZP 64/3-2 MAX. 40,5; MIN. 37,5

RZP 64/3-1: 21
RZP 64/3-2: 24

Tubeless direct connection

Adapter Gripper

Ø7 Ø4 M4

1,1 O-ring Ø4x1,5

C-nut for magnetic sensors

56 ± 0,02

Ø 8 Sensor holder (3x)

32 25 9 9

M4 /5 deep for air connection Close

M4 /5 deep for air connection Open

Type GA/GI with gripping force safety device

36,5 55,8 56,8

Ø 64

Accessories: Resilient pressure piece

RZP-64/3-1/2: 51,3
RZP-64/3-1/2 GA/GI: 64,8

Stroke 4

Elasticity MIN. 11N
MAX. 18N

Accessories: Protective cover

RZP-64/3-1/2: 48,8
RZP-64/3-1/2 GA/GI: 62,3

2,5 4

40 21 11

48 MAX. 54

RZP 64/3-1 MAX. 23,5; MIN. 17,5
RZP 64/3-2 MAX. 20,5; MIN. 17,5

Centric gripper RZP



3-jaw centric gripper

RZP-80



APPLICATION

Universal gripping of round and cylindrical workpieces with three centrally arranged gripper fingers for handling with robots or portals.

TYPE

Available from sizes 64 to 300, each in two stroke variants. Optionally with gripping force safety device and/or dirt cover.
Fastening of the gripper fingers via centering sleeves (included in the scope of delivery).

CUSTOMER BENEFITS

- ⊕ High gripping force with low dead weight and compact design
- ⊕ High torque support for using long gripper fingers thanks to elongated jaw guide
- ⊕ Maximum flexibility thanks to versatile connection and fastening options
- ⊕ Long service life and high reliability thanks to specially ground base jaws in proven T-slot guide

TECHNICAL FEATURES

- Centrally clamping in compact design made of high-strength, hard-coated aluminium alloy
- All functional parts made of hardened steel for maximum service life
- Wedge hook principle with pneumatic actuation
- Optional inductive and magnetic position sensors
- Optionally available with FKM seals for higher temperatures up to 150°C (on request)
- Integrable purge air connection to prevent contamination



C40
RZP-80 - 3-jaw centric gripper air operated

Item No.	170056	170057 ▲	170058	170059 ▲	170060 ▲	170061 ▲
Design			RZP-80/3-1 GA	RZP-80/3-2 GA		
Gripping force at 6 bar N	1200	2400	1550	3100	1700	3250
Stroke per jaw mm	8	4	8	4	8	4
Gripping force maintained N	-	-	350	700	350	700
Recommended workpiece weight kg	6	12	6	12	6	12
Weight kg	0,8	0,8	1	1	1	1
Height mm	49,3	49,3	64,3	64,3	64,3	64,3
Ø mm	96	96	96	96	96	96
Mx Nm	60	60	60	60	60	60
My Nm	95	95	95	95	95	95
Mz Nm	55	55	55	55	55	55
Fz N	1500	1500	1500	1500	1500	1500
Operating pressure min./max. without GA/GI bar	2-8	2-8	-	-	-	-
Operating pressure min./max. with GA/GI bar	-	-	4-7	4-7	4-7	4-7
Clamping time s	0,05	0,05	0,03	0,03	0,06	0,06
Opening time s	0,05	0,05	0,05	0,05	0,04	0,04
Air consumption per cycle cm ³	60	60	60	60	60	60
Max. allowable length of jaw mm	110	105	100	100	105	100

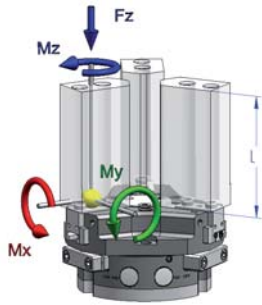
Centric gripper RZP



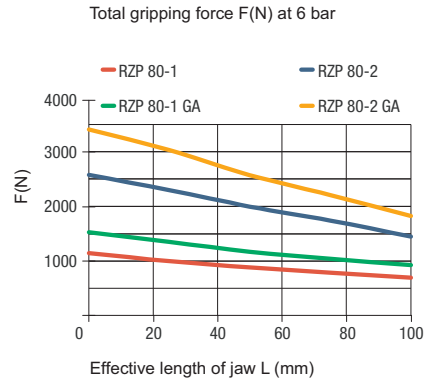
3-jaw centric gripper

RZP-80

Max. load on gripper and jaw



Clamping force diagram exterior gripping



3 x Borehole for resilient pressure piece

Ø 9 H8

19

11.3

RZP 80/3-1 MAX. 51; MIN. 43
RZP 80/3-2 MAX. 51; MIN. 47

RZP 80/3-1: 28
RZP 80/3-2: 32

32.3

26

45.5

Tubeless direct connection

Adapter

Gripper

Ø 7

Ø 4

M4

1.1

O-ring Ø4x1.5

3x 120°

M5/6 deep for sealing air connection

9

30°

(35) 17.5

40.5

15°

15°

Ø 44

M5/6 deep for air connection (2x)

14

(60.6)

1.1

M3

49.3

29

17

10

2.5

Ø 8 h6 (6x)

16 ± 0.02

RZP 80/3-1 MAX. 30; MIN. 22
RZP 80/3-2 MAX. 26; MIN. 22

Ø 96

Ø 80

Ø 70

Ø 6.6

Ø 5 H7 (2x)

M5 (6x)

30.8

Ø 6.4

Ø 11

M6 (3x)

9.2

48.3

C-nut for magnetic sensors

70 ± 0.02

Ø 8 Sensor holder (3x)

39.5

32

M4 /5 deep for air connection Close

9

M4 /5 deep for air connection Open

9

Type GA/GI with gripping force safety device

41

63.3

64.3

Ø 80

Accessories: Resilient pressure piece

RZP-80/3-1/2: 57.8
RZP-80/3-1/2 GA/GI: 72.8

4

Stroke 4.5

Elasticity MIN. 19N
MAX. 29N

Ø 44

3x 120°

40

12

Accessories: Protective cover

RZP-80/3-1/2: 54.8
RZP-80/3-1/2 GA/GI: 69.8

2.5

4

44

24

14

59.5

MAX. 65

RZP 80/3-1 MAX. 30; MIN. 22
RZP 80/3-2 MAX. 26; MIN. 22

Centric gripper RZP



3-jaw centric gripper

RZP-100



APPLICATION

Universal gripping of round and cylindrical workpieces with three centrally arranged gripper fingers for handling with robots or portals.

TYPE

Available from sizes 64 to 300, each in two stroke variants. Optionally with gripping force safety device and/or dirt cover.
Fastening of the gripper fingers via centering sleeves (included in the scope of delivery).

CUSTOMER BENEFITS

- ⊕ High gripping force with low dead weight and compact design
- ⊕ High torque support for using long gripper fingers thanks to elongated jaw guide
- ⊕ Maximum flexibility thanks to versatile connection and fastening options
- ⊕ Long service life and high reliability thanks to specially ground base jaws in proven T-slot guide

TECHNICAL FEATURES

- Centrally clamping in compact design made of high-strength, hard-coated aluminium alloy
- All functional parts made of hardened steel for maximum service life
- Wedge hook principle with pneumatic actuation
- Optional inductive and magnetic position sensors
- Optionally available with FKM seals for higher temperatures up to 150°C (on request)
- Integrable purge air connection to prevent contamination



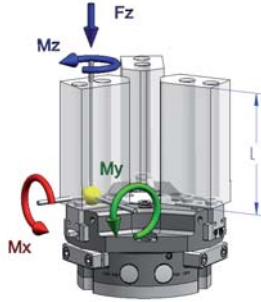
C40
RZP-100 - 3-jaw centric gripper air operated

Item No.	170062	170063 ▲	170064 ▲	170065 ▲	170066 ▲	170067 ▲
Design	RZP-100/3-1	RZP-100/3-2	RZP-100/3-1 GA	RZP-100/3-2 GA	RZP-100/3-1 GI	RZP-100/3-2 GI
Gripping force at 6 bar N	2000	4000	2650	5300	2800	5620
Stroke per jaw mm	10	5	10	5	10	5
Gripping force maintained N	-	-	650	1300	650	1300
Recommended workpiece weight kg	10	20	10	20	10	20
Weight kg	1,4	1,4	2	2	2	2
Height mm	59,3	59,3	79,3	79,3	79,3	79,3
Ø mm	120	120	120	120	120	120
Mx Nm	80	80	80	80	80	80
My Nm	115	115	115	115	115	115
Mz Nm	70	70	70	70	70	70
Fz N	2000	2000	2000	2000	2000	2000
Operating pressure min./max. without GA/GI bar	2-8	2-8	-	-	-	-
Operating pressure min./max. with GA/GI bar	-	-	4-7	4-7	4-7	4-7
Clamping time s	0,1	0,1	0,1	0,1	0,2	0,2
Opening time s	0,1	0,1	0,2	0,2	0,1	0,1
Air consumption per cycle cm ³	120	120	120	120	120	120
Max. allowable length of jaw mm	145	135	135	125	135	125

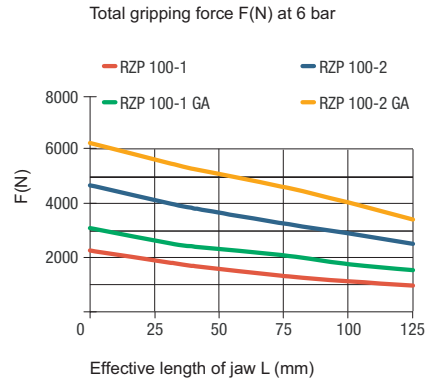
Centric gripper RZP

RZP-100

Max. load on gripper and jaw



Clamping force diagram exterior gripping



3 x Borehole for resilient pressure piece
 $\varnothing 16\text{ H8}$
 $\varnothing 12\text{ H8}$

RZP 100/3-1 MAX. 63,5; MIN. 53,5
 RZP 100/3-2 MAX. 63,5; MIN. 58,5

RZP 100/3-1:35
 RZP 100/3-2: 37,5

Tubeless direct connection
 Adapter Gripper
 $\varnothing 7$ $\varnothing 4$ M5
 1,1 O-ring $\varnothing 4 \times 1,5$

M5/5 deep for sealing air connection
 $3 \times 120^\circ$
 30°
 15°
 15°
 $\varnothing 58$
 $G1/8'' / 8$ deep for air connection (2x)
 M4 (3x)
 11

C-nut for magnetic sensors
 $90 \pm 0,02$
 $\varnothing 8$ Sensor holder (3x)
 49,5
 42
 12
 12
 M5 /5 deep for air connection Close
 M5 /5 deep for air connection Open

Type GA/GI with gripping force safety device

49,3
 $\varnothing 100$
 78,3
 79,3

Accessories: Resilient pressure piece

RZP-100/3-1/2: 68,8
 RZP-100/3-1/2 GA/GI: 88,8
 Stroke 5
 Elasticity MIN. 45N
 MAX. 67N

Accessories: Protective cover

RZP-100/3-1/2: 65,8
 RZP-100/3-1/2 GA/GI: 85,8
 RZP 100/3-1 max. 37,5; min. 27,5
 RZP 100/3-2 max. 32,5; min. 27,5

51
 28
 18
 74,4
 MAX. 80

Centric gripper RZP



3-jaw centric gripper

RZP-125



APPLICATION

Universal gripping of round and cylindrical workpieces with three centrally arranged gripper fingers for handling with robots or portals.

TYPE

Available from sizes 64 to 300, each in two stroke variants. Optionally with gripping force safety device and/or dirt cover. Fastening of the gripper fingers via centering sleeves (included in the scope of delivery).

CUSTOMER BENEFITS

- ⊕ High gripping force with low dead weight and compact design
- ⊕ High torque support for using long gripper fingers thanks to elongated jaw guide
- ⊕ Maximum flexibility thanks to versatile connection and fastening options
- ⊕ Long service life and high reliability thanks to specially ground base jaws in proven T-slot guide

TECHNICAL FEATURES

- Centrally clamping in compact design made of high-strength, hard-coated aluminium alloy
- All functional parts made of hardened steel for maximum service life
- Wedge hook principle with pneumatic actuation
- Optional inductive and magnetic position sensors
- Optionally available with FKM seals for higher temperatures up to 150°C (on request)
- Integrable purge air connection to prevent contamination



C40

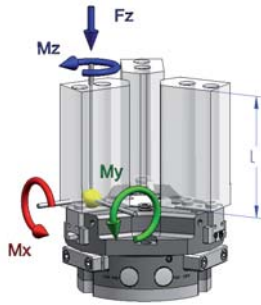
RZP-125 - 3-jaw centric gripper air operated

Item No.	170068 ▲	170069 ▲	170070	170071 ▲	170072	170073 ▲
Design	RZP-125/3-1	RZP-125/3-2	RZP-125/3-1 GA	RZP-125/3-2 GA	RZP-125/3-1 GI	RZP-125/3-2 GI
Gripping force at 6 bar N	3200	6000	4200	7800	4400	8000
Stroke per jaw mm	13	6	13	6	13	6
Gripping force maintained N	-	-	1000	1800	1000	1800
Recommended workpiece weight kg	16	30	16	30	16	30
Weight kg	2,4	2,4	3,2	3,2	3,2	3,2
Height mm	67	67	91,5	91,5	91,5	91,5
Ø mm	150	150	150	150	150	150
Mx Nm	120	120	120	120	120	120
My Nm	145	145	145	145	145	145
Mz Nm	100	100	100	100	100	100
Fz N	2800	2800	2800	2800	2800	2800
Operating pressure min./max. without GA/GI bar	2-8	2-8	-	-	-	-
Operating pressure min./max. with GA/GI bar	-	-	4-7	4-7	4-7	4-7
Clamping time s	0,2	0,2	0,17	0,17	0,35	0,35
Opening time s	0,2	0,2	0,35	0,35	0,17	0,17
Air consumption per cycle cm ³	230	230	230	230	230	230
Max. allowable length of jaw mm	180	170	170	160	170	160

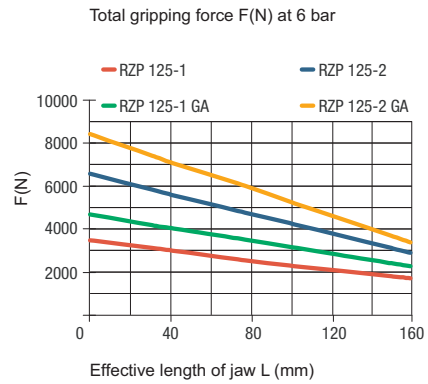
Centric gripper RZP

RZP-125

Max. load on gripper and jaw



Clamping force diagram exterior gripping



3 x Borehole for resilient pressure piece
 $\varnothing 16\text{ H8}$
 $\varnothing 14\text{ H8}$

RZP 125/3-1 MAX. 79,5; MIN. 66,5
 RZP 125/3-2 MAX. 79,5; MIN. 73,5

Tubeless direct connection
 Adapter
 Gripper
 $\varnothing 7$
 $\varnothing 4$
 M5
 1,1
 O-ring $\varnothing 4 \times 1,5$

RZP 125/3-1 MAX. 48; MIN. 35
 RZP 125/3-2 MAX. 41; MIN. 35

C-nut for magnetic sensors
 $112 \pm 0,02$
 $\varnothing 8$ Sensor holder (3x)
 61
 52,7
 M5 /5 deep for air connection Close
 15
 15
 M5 /5 deep for air connection Open

Type GA/GI with gripping force safety device
 59,5
 90,5
 91,5
 $\varnothing 125$

Accessories: Resilient pressure piece
 RZP-125/3-1/2: 77,5
 RZP-125/3-1/2 GA/GI: 102
 Stroke 6
 Elasticity MIN. 120N
 MAX. 150N
 $\varnothing 7,2$
 62,5
 15
 $3 \times 120^\circ$

Accessories: Protective cover
 RZP-125/3-1/2: 73,5
 RZP-125/3-1/2 GA/GI: 98
 3,5
 4
 60
 28
 20
 88,5
 MAX. 99
 RZP 125/3-1 MAX. 48; MIN. 35
 RZP 125/3-2 MAX. 41; MIN. 35

Centric gripper RZP



3-jaw centric gripper

RZP-160



APPLICATION

Universal gripping of round and cylindrical workpieces with three centrally arranged gripper fingers for handling with robots or portals.

TYPE

Available from sizes 64 to 300, each in two stroke variants. Optionally with gripping force safety device and/or dirt cover.

Fastening of the gripper fingers via centering sleeves (included in the scope of delivery).

CUSTOMER BENEFITS

- ③ High gripping force with low dead weight and compact design
- ③ High torque support for using long gripper fingers thanks to elongated jaw guide
- ③ Maximum flexibility thanks to versatile connection and fastening options
- ③ Long service life and high reliability thanks to specially ground base jaws in proven T-slot guide

TECHNICAL FEATURES

- Centrally clamping in compact design made of high-strength, hard-coated aluminium alloy
- All functional parts made of hardened steel for maximum service life
- Wedge hook principle with pneumatic actuation
- Optional inductive and magnetic position sensors
- Optionally available with FKM seals for higher temperatures up to 150°C (on request)
- Integrable purge air connection to prevent contamination



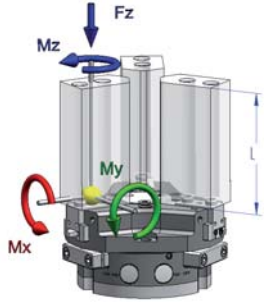
C40

RZP-160 - 3-jaw centric gripper air operated

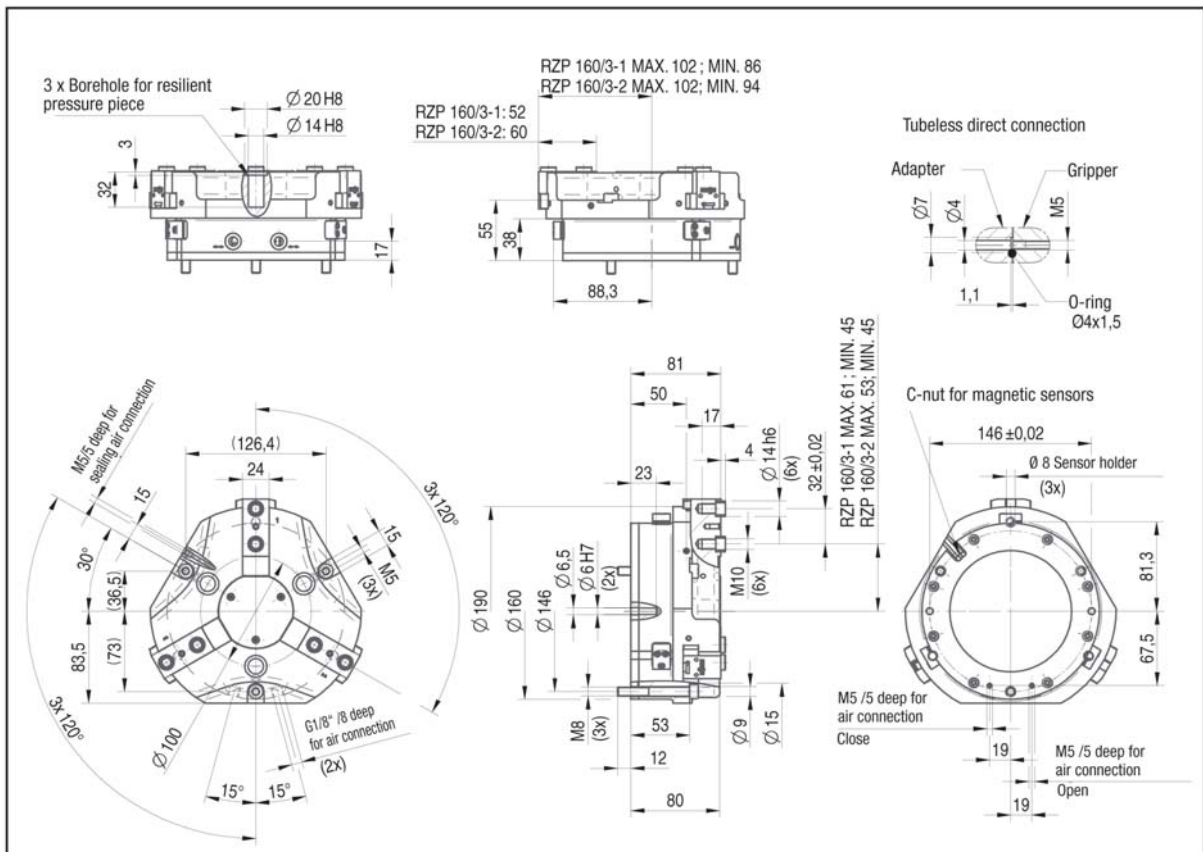
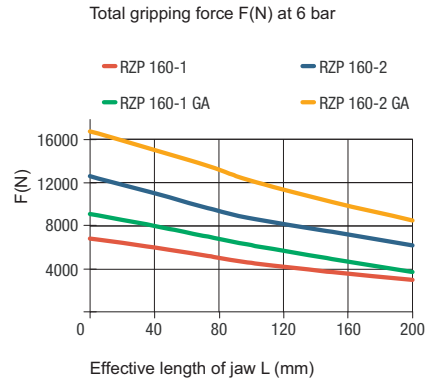
Item No.	170074	170075 ▲	170076 ▲	170077 ▲	170078 ▲	170079 ▲
Design	RZP-160/3-1	RZP-160/3-2	RZP-160/3-1 GA	RZP-160/3-2 GA	RZP-160/3-1 GI	RZP-160/3-2 GI
Gripping force at 6 bar N	6000	11000	8000	15000	8500	16000
Stroke per jaw mm	16	8	16	8	16	8
Gripping force maintained N	-	-	2000	4000	2000	4000
Recommended workpiece weight kg	30	55	30	55	30	55
Weight kg	5,5	5,5	8	8	8	8
Height mm	81	81	111	111	111	111
Ø mm	190	190	190	190	190	190
Mx Nm	170	170	170	170	170	170
My Nm	180	180	180	180	180	180
Mz Nm	130	130	130	130	130	130
Fz N	4300	4300	4300	4300	4300	4300
Operating pressure min./max. without GA/GI bar	2-8	2-8	-	-	-	-
Operating pressure min./max. with GA/GI bar	-	-	4-7	4-7	4-7	4-7
Clamping time s	0,5	0,5	0,4	0,4	0,8	0,8
Opening time s	0,5	0,5	0,8	0,8	0,4	0,4
Air consumption per cycle cm ³	520	520	520	520	520	520
Max. allowable length of jaw mm	220	210	210	200	200	200

RZP-160

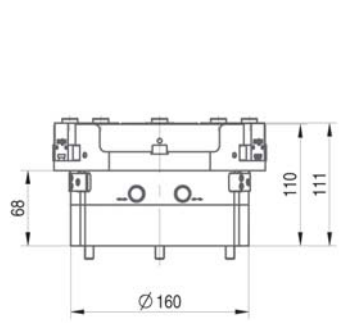
Max. load on gripper and jaw



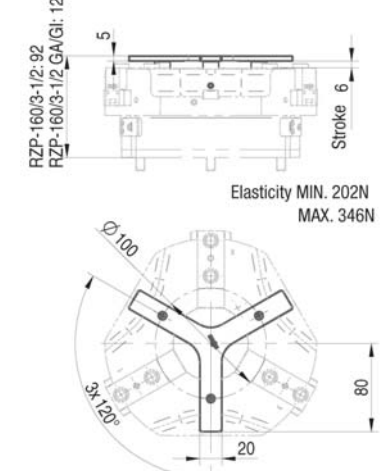
Clamping force diagram exterior gripping



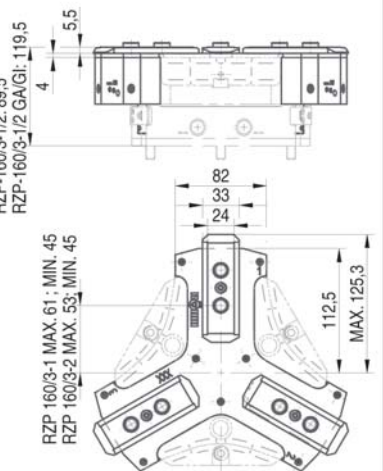
Type GA/GI with gripping force safety device



Accessories: Resilient pressure piece



Accessories: Protective cover





3-jaw centric gripper

RZP-200



APPLICATION

Universal gripping of round and cylindrical workpieces with three centrally arranged gripper fingers for handling with robots or portals.

TYPE

Available from sizes 64 to 300, each in two stroke variants. Optionally with gripping force safety device and/or dirt cover. Fastening of the gripper fingers via centering sleeves (included in the scope of delivery).

CUSTOMER BENEFITS

- ⊕ High gripping force with low dead weight and compact design
- ⊕ High torque support for using long gripper fingers thanks to elongated jaw guide
- ⊕ Maximum flexibility thanks to versatile connection and fastening options
- ⊕ Long service life and high reliability thanks to specially ground base jaws in proven T-slot guide

TECHNICAL FEATURES

- Centrally clamping in compact design made of high-strength, hard-coated aluminium alloy
- All functional parts made of hardened steel for maximum service life
- Wedge hook principle with pneumatic actuation
- Optional inductive and magnetic position sensors
- Optionally available with FKM seals for higher temperatures up to 150°C (on request)
- Integrable purge air connection to prevent contamination



C40

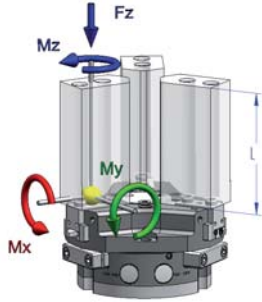
RZP-200 - 3-jaw centric gripper air operated

Item No.	170080 ▲	170081 ▲	170082	170083 ▲	170084	170085 ▲
Design	RZP-200/3-1	RZP-200/3-2	RZP-200/3-1 GA	RZP-200/3-2 GA	RZP-200/3-1 GI	RZP-200/3-2 GI
Gripping force at 6 bar N	7500	12500	9300	15500	9500	16200
Stroke per jaw mm	25	14	25	14	25	14
Gripping force maintained N	-	-	1800	3000	1800	3000
Recommended workpiece weight kg	37	62	37	62	37	62
Weight kg	10	10	13	13	13	13
Height mm	96	96	132	132	132	132
Ø mm	250	250	250	250	250	250
Mx Nm	180	180	180	180	180	180
My Nm	200	200	200	200	200	200
Mz Nm	100	100	100	100	100	100
Fz N	5000	5000	5000	5000	5000	5000
Operating pressure min./max. without GA/GI bar	2-8	2-8	-	-	-	-
Operating pressure min./max. with GA/GI bar	-	-	4-7	4-7	4-7	4-7
Clamping time s	1,2	1,2	1	1	1,5	1,5
Opening time s	1,2	1,2	1,5	1,5	1	1
Air consumption per cycle cm ³	1000	1000	1000	1000	1000	1000
Max. allowable length of jaw mm	280	250	250	200	250	200

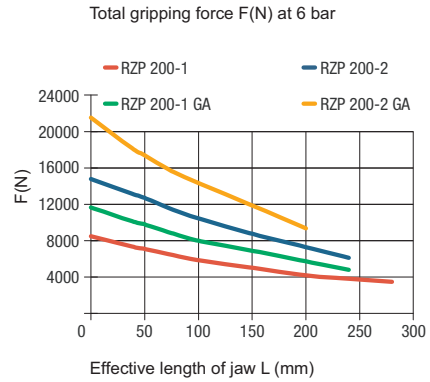
Centric gripper RZP

RZP-200

Max. load on gripper and jaw



Clamping force diagram exterior gripping



3 x Borehole for resilient pressure piece
 $\text{Ø} 22 \text{ H8}$
 $\text{Ø} 16 \text{ H8}$

RZP 200/3-1: 64,5
 RZP 200/3-2: 74,5

RZP 200/3-1 MAX. 127,5; MIN. 102,5
 RZP 200/3-2 MAX. 126,5; MIN. 112,5

Tubeless direct connection
 Adapter
 Gripper
 $\text{Ø} 7$
 $\text{Ø} 4$
 M5
 1,1
 O-ring $\text{Ø} 4 \times 1,5$

C-nut for magnetic sensors
 $184 \pm 0,02$
 $\text{Ø} 8$ Sensor holder (3x)
 98
 87,5
 23
 23

M5/5 deep for sealing air connection
 $159,3$
 32
 18
 M5 (3x)
 30°
 105
 15
 15°
 15°
 $\text{Ø} 120$
 3x 120°
 G1/8" deep for air connection (2x)

96
 17
 58
 25
 4
 $\text{Ø} 16 \text{ h16}$ (6x)
 $40 \pm 0,02$
 RZP 200/3-1 MAX. 74; MIN. 49
 RZP 200/3-2 MAX. 62,3; MIN. 48,3
 $\text{Ø} 250$
 $\text{Ø} 200$
 $\text{Ø} 184$
 $\text{Ø} 8,5$
 $\text{Ø} 8 \text{ H7}$ (2x)
 M12 (6x)
 M10 (3x)
 61
 $\text{Ø} 11$
 $\text{Ø} 18$
 14
 95

184 ± 0.02
 $\text{Ø} 8$ Sensor holder (3x)
 98
 87.5
 23
 23

Type GA/GI with gripping force safety device

86
 131
 132
 $\text{Ø} 200$

Accessories: Resilient pressure piece

RZP-200/3-1/2-107
 RZP-200/3-1/2 GA/GI: 143
 Stroke 6
 $\text{Ø} 120$
 100
 25
 Elasticity MIN. 238N
 MAX. 308N

Accessories: Protective cover

RZP-200/3-1/2-104,5
 RZP-200/3-1/2 GA/GI: 140,5
 94
 47
 32
 138
 MAX. 159,5
 RZP 200/3-1 MAX. 74; MIN. 49
 RZP 200/3-2 MAX. 62,3; MIN. 48,3

Centric gripper RZP



3-jaw centric gripper

RZP-240



APPLICATION

Universal gripping of round and cylindrical workpieces with three centrally arranged gripper fingers for handling with robots or portals.

TYPE

Available from sizes 64 to 300, each in two stroke variants. Optionally with gripping force safety device and/or dirt cover. Fastening of the gripper fingers via centering sleeves (included in the scope of delivery).

CUSTOMER BENEFITS

- ☉ High gripping force with low dead weight and compact design
- ☉ High torque support for using long gripper fingers thanks to elongated jaw guide
- ☉ Maximum flexibility thanks to versatile connection and fastening options
- ☉ Long service life and high reliability thanks to specially ground base jaws in proven T-slot guide

TECHNICAL FEATURES

- Centrally clamping in compact design made of high-strength, hard-coated aluminium alloy
- All functional parts made of hardened steel for maximum service life
- Wedge hook principle with pneumatic actuation
- Optional inductive and magnetic position sensors
- Optionally available with FKM seals for higher temperatures up to 150°C (on request)
- Integrable purge air connection to prevent contamination



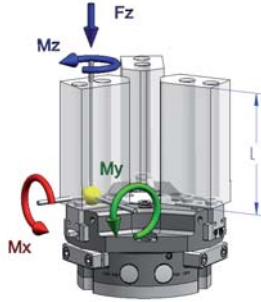
C40

RZP-240 - 3-jaw centric gripper air operated

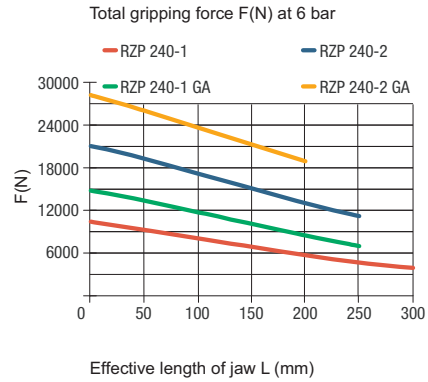
Item No.	170086	170087▲	170088▲	170089▲	170090▲	170091▲
Design	RZP-240/3-1	RZP-240/3-2	RZP-240/3-1 GA	RZP-240/3-2 GA	RZP-240/3-1 GI	RZP-240/3-2 GI
Gripping force at 6 bar N	10500	18000	14000	24000	15000	25000
Stroke per jaw mm	30	17	30	17	30	17
Gripping force maintained N	-	-	3500	6000	3500	6000
Recommended workpiece weight kg	53	90	53	90	53	90
Weight kg	20	20	24	24	24	24
Height mm	128,1	128,1	171,5	171,5	171,5	171,5
Ø mm	290	290	290	290	290	290
Mx Nm	265	265	265	265	265	265
My Nm	250	250	250	250	250	250
Mz Nm	160	160	160	160	160	160
Fz N	6200	6200	6200	6200	6200	6200
Operating pressure min./max. without GA/GI bar	2-8	2-8	-	-	-	-
Operating pressure min./max. with GA/GI bar	-	-	4-7	4-7	4-7	4-7
Clamping time s	1,3	1,3	1,1	1,1	1,7	1,7
Opening time s	1,3	1,3	2,1	2,1	1,1	1,1
Air consumption per cycle cm ³	1700	1700	1700	1700	1700	1700
Max. allowable length of jaw mm	300	250	250	200	250	200

RZP-240

Max. load on gripper and jaw



Clamping force diagram exterior gripping



RZP 240/3-1 MAX. 146; MIN. 116
RZP 240/3-2 MAX. 144,5; MIN. 127,5

RZP 240/3-1: 69,5
RZP 240/3-2: 80

Tubeless direct connection

C-nut for magnetic sensors

Type GA/GI with gripping force safety device

Accessories: Resilient pressure piece

RZP-240/3-1/2: 140,5
RZP-240/3-1/2 GA/GI: 183,9

Elasticity MIN. 302N
MAX. 454N

Accessories: Protective cover

RZP-240/3-1/2: 136,6
RZP-240/3-1/2 GA/GI: 180

RZP 240/3-1 MAX. 88; MIN. 58
RZP 240/3-2 MAX. 75; MIN. 58

Centric gripper RZP



3-jaw centric gripper

RZP-300



APPLICATION

Universal gripping of round and cylindrical workpieces with three centrally arranged gripper fingers for handling with robots or portals.

TYPE

Available from sizes 64 to 300, each in two stroke variants. Optionally with gripping force safety device and/or dirt cover. Fastening of the gripper fingers via centering sleeves (included in the scope of delivery).

CUSTOMER BENEFITS

- ⊕ High gripping force with low dead weight and compact design
- ⊕ High torque support for using long gripper fingers thanks to elongated jaw guide
- ⊕ Maximum flexibility thanks to versatile connection and fastening options
- ⊕ Long service life and high reliability thanks to specially ground base jaws in proven T-slot guide

TECHNICAL FEATURES

- Centrally clamping in compact design made of high-strength, hard-coated aluminium alloy
- All functional parts made of hardened steel for maximum service life
- Wedge hook principle with pneumatic actuation
- Optional inductive and magnetic position sensors
- Optionally available with FKM seals for higher temperatures up to 150°C (on request)
- Integrable purge air connection to prevent contamination

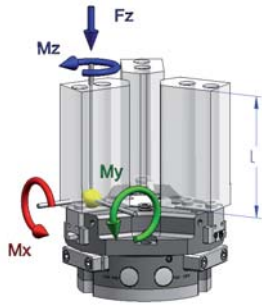


C40
RZP-300 - 3-jaw centric gripper air operated

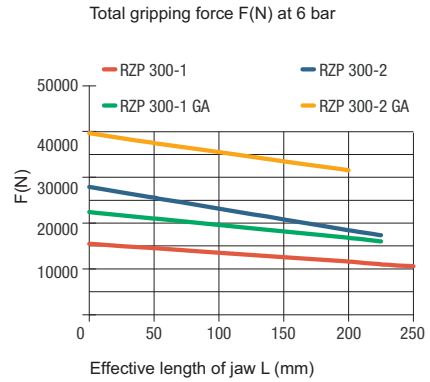
Item No.	170092	170093 ▲	170094 ▲	170095 ▲	170096	170097 ▲
Design	RZP-300/3-1	RZP-300/3-2	RZP-300/3-1 GA	RZP-300/3-2 GA	RZP-300/3-1 GI	RZP-300/3-2 GI
Gripping force at 6 bar N	16000	28000	20000	37500	22500	38000
Stroke per jaw mm	35	20	35	20	35	20
Gripping force maintained N	-	-	6000	9500	6000	9500
Recommended workpiece weight kg	80	140	80	110	80	140
Weight kg	30	30	40	40	40	40
Height mm	146	146	196	196	196	196
Ø mm	345	345	345	345	345	345
Mx Nm	400	400	400	400	400	400
My Nm	400	400	400	400	400	400
Mz Nm	250	250	250	250	250	250
Fz N	8000	8000	8000	8000	8000	8000
Operating pressure min./max. without GA/GI bar	2-8	2-8	-	-	-	-
Operating pressure min./max. with GA/GI bar	-	-	4-7	4-7	4-7	4-7
Clamping time s	1,3	1,3	1,2	1,2	2	2
Opening time s	1,3	1,3	2,5	2,5	1,2	1,2
Air consumption per cycle cm ³	2700	2700	2700	2700	2700	2700
Max. allowable length of jaw mm	250	225	225	200	225	200

RZP-300

Max. load on gripper and jaw



Clamping force diagram exterior gripping



3 x Borehole for resilient pressure piece

Ø 32 H8
Ø 25 H8

50
4
33.5

RZP 300/3-1 MAX. 176 ; MIN. 141
RZP 300/3-2 MAX. 176.5 ; MIN. 156.5

RZP 300/3-1: 78
RZP 300/3-2: 93

105
85

Tubeless direct connection

Adapter Gripper

Ø11 Ø8 M8

1,1 O-ring Ø8x1,5

M3/6 deep for sealing air connection

(225,2)
42
30
3x 120°
26
30°
30
(65)
155
(130)
Ø 184
6/14" R8 deep for air connection (2x)
15° 15°

146
92
28
33
Ø 22 h6
46±0,02
6x
RZP 300/3-1 MAX. 114 ; MIN. 79
RZP 300/3-2 MAX. 99.5 ; MIN. 79.5

C-nut for magnetic sensors

270±0,02

Ø 8 Sensor holder (3x)

137
123

M8 /6 deep for air connection Close

32 M8 /6 deep for air connection Open

32

Type GA/GI with gripping force safety device

135
195
196
Ø 300

Accessories: Resilient pressure piece

RZP-300/3-1/2: 162
RZP-300/3-1/2 GA/GI: 212

Stroke 8

Elasticity MIN. 360N
MAX. 488N

Ø 184
3x 120°
160
30

Accessories: Protective cover

RZP-300/3-1/2: 159.5
RZP-300/3-1/2 GA/GI: 209.5

9,5
5

RZP 300/3-1 MAX. 114 ; MIN. 79
RZP 300/3-2 MAX. 99.5 ; MIN. 79.5

132
51
42
188
MAX. 219

Centric gripper RZP



3-jaw centric gripper

Accessories RZP

Jaw blank - aluminium (including fixing screws)
3-jaw set



Item no.	Number of jaws	Design	For
170550	3	aluminium	RZP-64
170552 ▲	3	aluminium	RZP-80
170554 ▲	3	aluminium	RZP-100
170556 ▲	3	aluminium	RZP-125
170558 ▲	3	aluminium	RZP-160
170560 ▲	3	aluminium	RZP-200
170562 ▲	3	aluminium	RZP-240
170564 ▲	3	aluminium	RZP-300

Jaw blank - steel (including fixing screws)
3-jaw set



Item no.	Number of jaws	Design	For
170500 ▲	3	steel	RZP-64
170502 ▲	3	steel	RZP-80
170504 ▲	3	steel	RZP-100
170506 ▲	3	steel	RZP-125
170508 ▲	3	steel	RZP-160
170510 ▲	3	steel	RZP-200
170512 ▲	3	steel	RZP-240
170514 ▲	3	steel	RZP-300

Protective cover



Item no.	For
170810 ▲	RZP-64
170811 ▲	RZP-80
170812 ▲	RZP-100
170813	RZP-125
170814	RZP-160
170815 ▲	RZP-200
170816 ▲	RZP-240
170817 ▲	RZP-300

Resilient pressure piece



Item no.	For
170516 ▲	RZP-64
170517 ▲	RZP-80
170518 ▲	RZP-100
170519 ▲	RZP-125
170520 ▲	RZP-160
170521 ▲	RZP-200
170522 ▲	RZP-240
170523 ▲	RZP-300

Pressure maintenance
for double acting gripper (G1/8)



Item no.
1078823

Compressed air connection - L-Plug connector



Item no.	Design	For
802539	L-Plug connector M5 - 6 mm	RPP-50 / RPP-64 / RPP-80
477025	L-Plug connector 1/8 - 6 mm	RPP-100 - RPP-240
477024 ▲	L-Plug connector 1/4 - 6 mm	RPP-300 / RPP-380

Proximity switch



Item no.	Size (diameter/ length)	Design	For
229114	M8x1x30,5	5 m cable, open leads	RZP-64/-80/- 100/-125/-160
389661	M8x1x46,5	3 m cable, open leads	RZP-200/-240/- 300

Magnetic field sensors

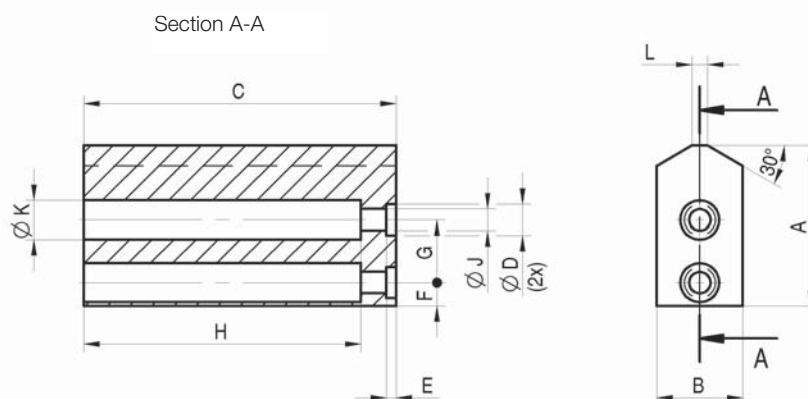
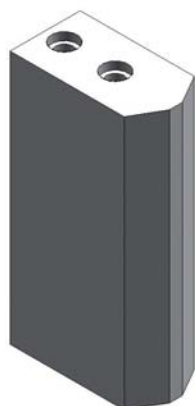


Item no.	Size (diameter/ length)	Design	For
1231970	C-Nut	30 cm cable, plug M8x1-S49	all sizes, all types



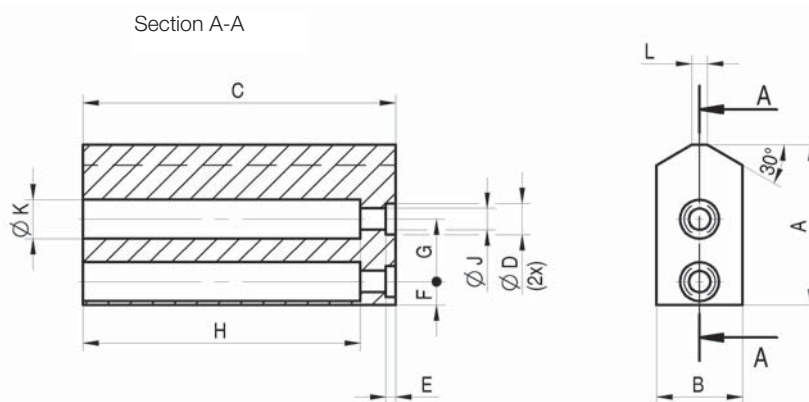
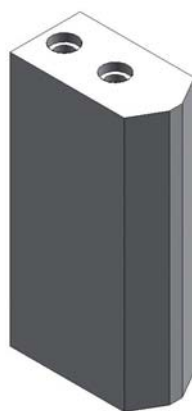
3-jaw centric gripper

Accessories RZP



Jaw blank - steel (including fixing screws)

RPP / RZP	64	80	100	125	160	200	240	300
RPP - 2-jaw set	170575	170576	170577	170578	170579	170580	170581	170582
RZP - 3-jaw set	170500	170502	170504	170506	170508	170510	170512	170514
A	32	41	51	60	80	96	109	130
B	20	22	30	35	40	40	50	60
C	64	80	100	125	160	200	220	200
D +0,04/+0,02	6	8	10	10	14	16	16	22
E+0,2	2,5	2,5	3	3	4	4	4	6
F±0,1	5	6	7	9,5	10	15	15,5	20
G±0,1	13	16	20	24	32	40	44	46
H	57	71	91	115	146	181	204	177
J	4,5	5,5	6,6	6,6	11	13,5	13,5	17,5
K	8	10	11	11	18	20	20	26
L	3	4	5	6	8	13	10	16
Weight per jaw kg	0,25	0,45	1,0	1,75	3,2	5,0	8,0	10,2



Jaw blank - aluminium (including fixing screws)

RPP / RZP	64	80	100	125	160	200	240	300
RPP - 2-jaw set	170585	170586	170587	170588	170589	170590	170591	170592
RZP - 3-jaw set	170550	170552	170554	170556	170558	170560	170562	170564
A	32	41	51	60	80	96	109	130
B	20	25	30	35	40	45	50	60
C	64	80	100	125	160	200	220	200
D +0,04/+0,02	6	8	10	10	14	16	16	22
E+0,2	2,5	2,5	3	3	4	4	4	6
F±0,1	5	6	7	9,5	10	15	15,5	20
G±0,1	13	16	20	24	32	40	44	46
H	55	69	88	112	141	176	200	170
J	4,5	5,5	6,6	6,6	11	13,5	13,5	17,5
K	8	10	11	11	18	20	20	26
L	3	4	5	6	8	9	10	16
Weight per jaw kg	0,1	0,18	0,35	0,6	1,2	2,0	2,8	3,4

▲ on request

www.eshop.roehm.biz

5063

Accessories RZP



3-jaw centric gripper

RZP-A 64



APPLICATION

Universal gripping of round and cylindrical workpieces with three centrally arranged gripper fingers for handling with robots or portals.

TYPE

Available from sizes 64 to 160, each in two stroke variants. Optionally with gripping force safety device and/or dirt cover.
Fastening of the gripper fingers via centering sleeves (included in the scope of delivery).

CUSTOMER BENEFITS

- ⊕ High gripping force with low dead weight and compact design
- ⊕ Maximum flexibility thanks to versatile connection and fastening options
- ⊕ Long service life and high reliability thanks to specially ground base jaws in proven T-slot guide

TECHNICAL FEATURES

- Centrally clamping in compact design made of high-strength, hard-coated aluminium alloy
- All functional parts made of hardened steel for maximum service life
- Wedge hook principle with pneumatic actuation
- Optional inductive and magnetic position sensors
- Optionally available with FKM seals for higher temperatures up to 150°C (on request)
- Integrable purge air connection to prevent contamination



C40

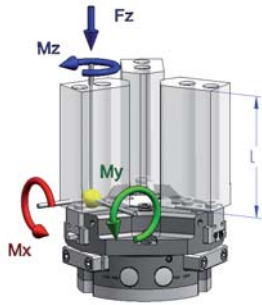
RZP-A 64 - 3-jaw centric gripper air operated with tongue and groove

Item No.	436958 ▲	436959 ▲	436960 ▲	436961 ▲	436962 ▲	436963 ▲
Design	RZP-A 64/3-1	RZP-A 64/3-2	RZP-A 64/3-1 GA	RZP-A 64/3-2 GA	RZP-A 64/3-1 GI	RZP-A 64/3-2 GI
Gripping force at 6 bar N	700	1350	880	1700	1000	1900
Stroke per jaw mm	6	3	6	3	6	3
Gripping force maintained N	-	-	180	350	180	350
Recommended workpiece weight kg	3,5	6,5	3,5	6,5	3,5	6,5
Weight kg	0,4	0,4	0,5	0,5	0,5	0,5
Height mm	42	42	55,5	55,5	55,5	55,5
Ø mm	64	64	64	64	64	64
Mx Nm	15	15	15	15	15	15
My Nm	30	30	30	30	30	30
Mz Nm	25	25	25	25	25	25
Fz N	1400	1400	1400	1400	1400	1400
Operating pressure min./max. without GA/GI bar	2-8	2-8	-	-	-	-
Operating pressure min./max. with GA/GI bar	-	-	4-7	4-7	4-7	4-7
Clamping time s	0,01	0,01	0,03	0,03	0,04	0,04
Opening time s	0,01	0,01	0,04	0,04	0,03	0,03
Air consumption per cycle cm ³	25	25	25	25	25	25
Max. allowable length of jaw mm	64	64	64	64	64	64

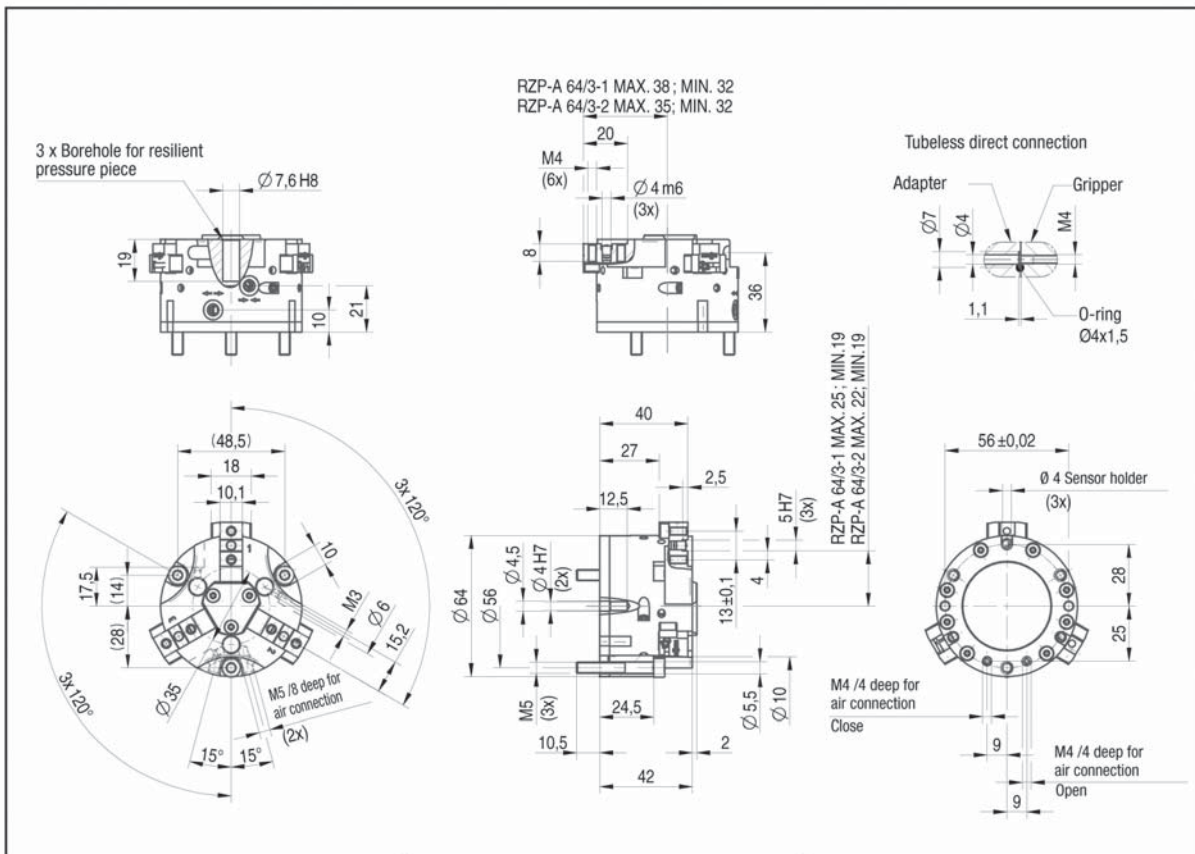
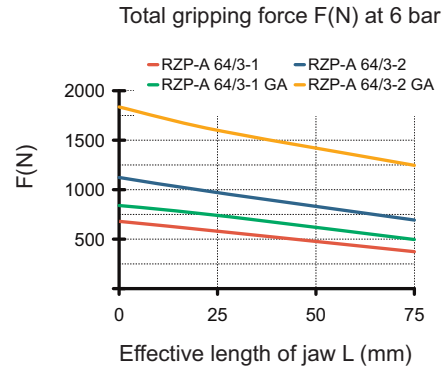
3-jaw centric gripper
RZP-A

RZP-A 64

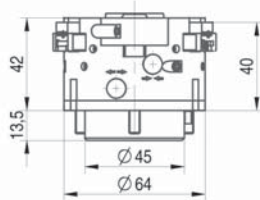
Max. load on gripper and jaw



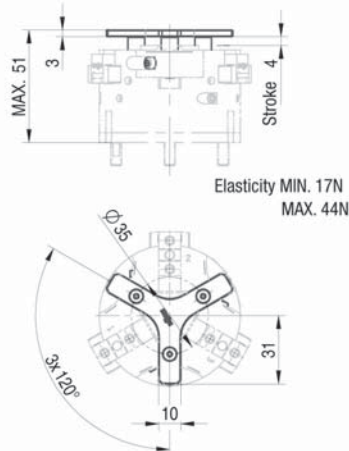
Clamping force diagram exterior gripping



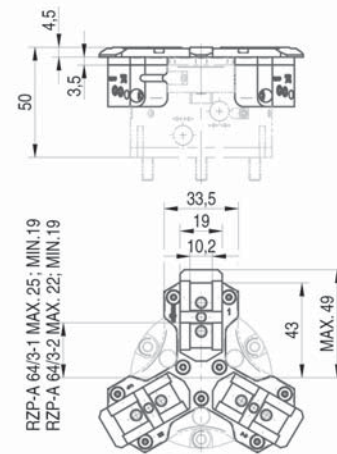
Type GA/GI with gripping force safety device



Accessories: Resilient pressure piece



Accessories: Protective cover





3-jaw centric gripper

RZP-A 80



APPLICATION

Universal gripping of round and cylindrical workpieces with three centrally arranged gripper fingers for handling with robots or portals.

TYPE

Available from sizes 64 to 160, each in two stroke variants. Optionally with gripping force safety device and/or dirt cover. Fastening of the gripper fingers via centering sleeves (included in the scope of delivery).

CUSTOMER BENEFITS

- ⊕ High gripping force with low dead weight and compact design
- ⊕ Maximum flexibility thanks to versatile connection and fastening options
- ⊕ Long service life and high reliability thanks to specially ground base jaws in proven T-slot guide

TECHNICAL FEATURES

- Centrally clamping in compact design made of high-strength, hard-coated aluminium alloy
- All functional parts made of hardened steel for maximum service life
- Wedge hook principle with pneumatic actuation
- Optional inductive and magnetic position sensors
- Optionally available with FKM seals for higher temperatures up to 150°C (on request)
- Integrable purge air connection to prevent contamination



C40

RZP-A 80 - 3-jaw centric gripper air operated with tongue and groove

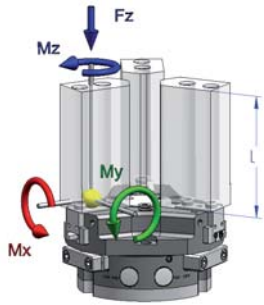
Item No.	434833 ▲	435042 ▲	434837 ▲	435043 ▲	434838 ▲	435044 ▲
Design	RZP-A 80/3-1	RZP-A 80/3-2	RZP-A 80/3-1 GA	RZP-A 80/3-2 GA	RZP-A 80/3-1 GI	RZP-A 80/3-2 GI
Gripping force at 6 bar N	1000	2500	1600	3400	1700	3500
Stroke per jaw mm	8	4	8	4	8	4
Gripping force maintained N	-	-	350	700	350	700
Recommended workpiece weight kg	5	12	5	12	5	12
Weight kg	0,75	0,75	0,95	0,95	0,95	0,95
Height mm	48	48	63	63	63	63
Ø mm	80	80	80	80	80	80
Mx Nm	30	30	30	30	30	30
My Nm	90	90	90	90	90	90
Mz Nm	35	35	35	35	35	35
Fz N	1800	1800	1800	1800	1800	1800
Operating pressure min./max. without GA/GI bar	2-8	2-8	-	-	-	-
Operating pressure min./max. with GA/GI bar	-	-	4-7	4-7	4-7	4-7
Clamping time s	0,06	0,06	0,05	0,05	0,08	0,08
Opening time s	0,05	0,05	0,08	0,08	0,05	0,05
Air consumption per cycle cm ³	60	60	60	60	60	60
Max. allowable length of jaw mm	80	80	80	80	80	80

3-jaw centric gripper
RZP-A

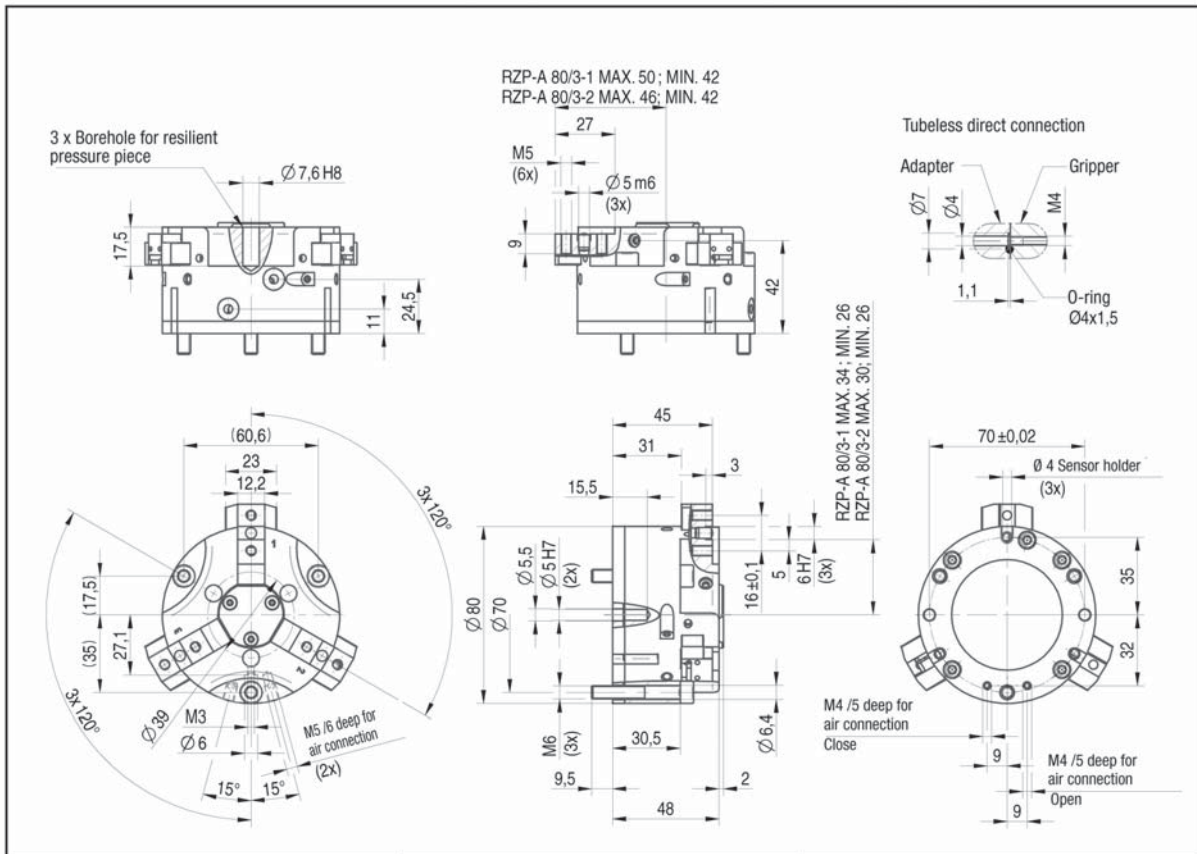
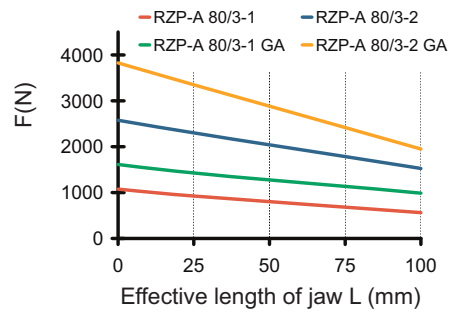
RZP-A 80

Max. load on gripper and jaw

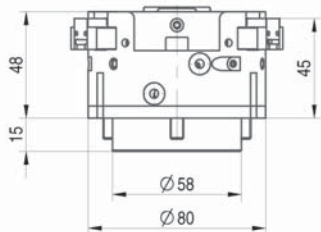
Clamping force diagram exterior gripping



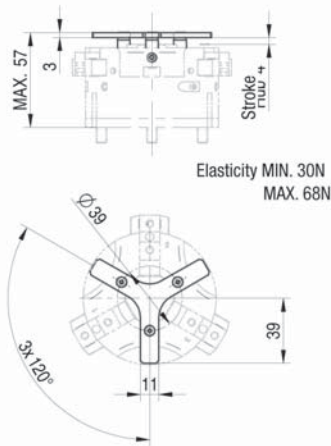
Total gripping force F(N) at 6 bar



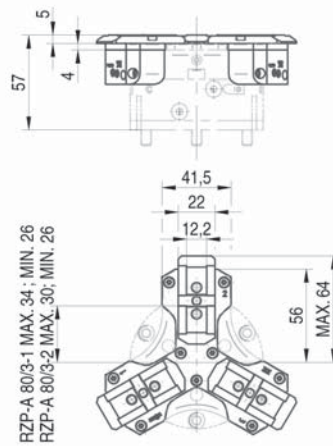
Type GA/GI with gripping force safety device



Accessories: Resilient pressure piece



Accessories: Protective cover





3-jaw centric gripper

RZP-A 100



APPLICATION

Universal gripping of round and cylindrical workpieces with three centrally arranged gripper fingers for handling with robots or portals.

TYPE

Available from sizes 64 to 160, each in two stroke variants. Optionally with gripping force safety device and/or dirt cover. Fastening of the gripper fingers via centering sleeves (included in the scope of delivery).

CUSTOMER BENEFITS

- ⊕ High gripping force with low dead weight and compact design
- ⊕ Maximum flexibility thanks to versatile connection and fastening options
- ⊕ Long service life and high reliability thanks to specially ground base jaws in proven T-slot guide

TECHNICAL FEATURES

- Centrally clamping in compact design made of high-strength, hard-coated aluminium alloy
- All functional parts made of hardened steel for maximum service life
- Wedge hook principle with pneumatic actuation
- Optional inductive and magnetic position sensors
- Optionally available with FKM seals for higher temperatures up to 150°C (on request)
- Integrable purge air connection to prevent contamination



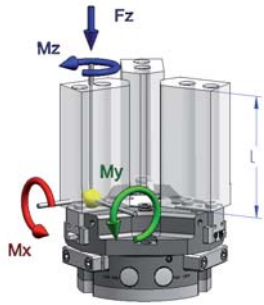
C40

RZP-A 100 - 3-jaw centric gripper air operated with tongue and groove

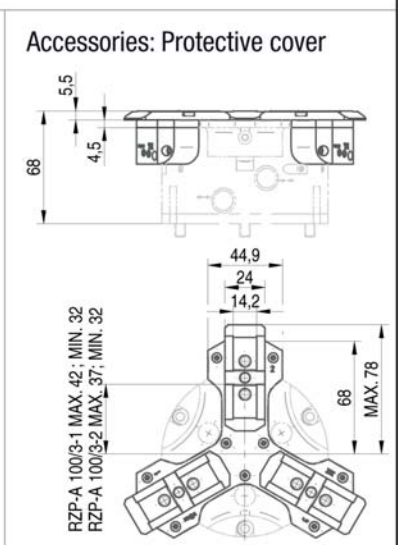
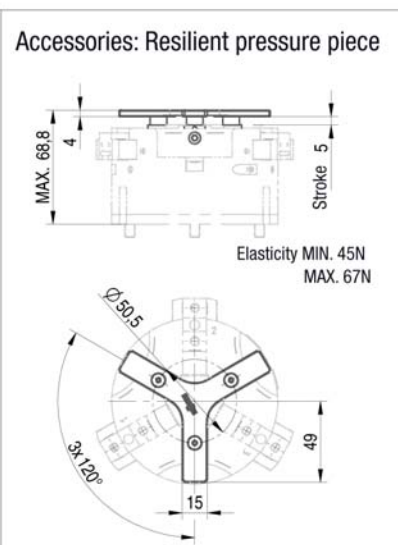
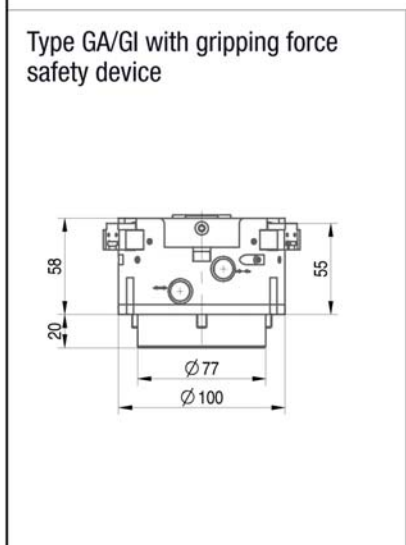
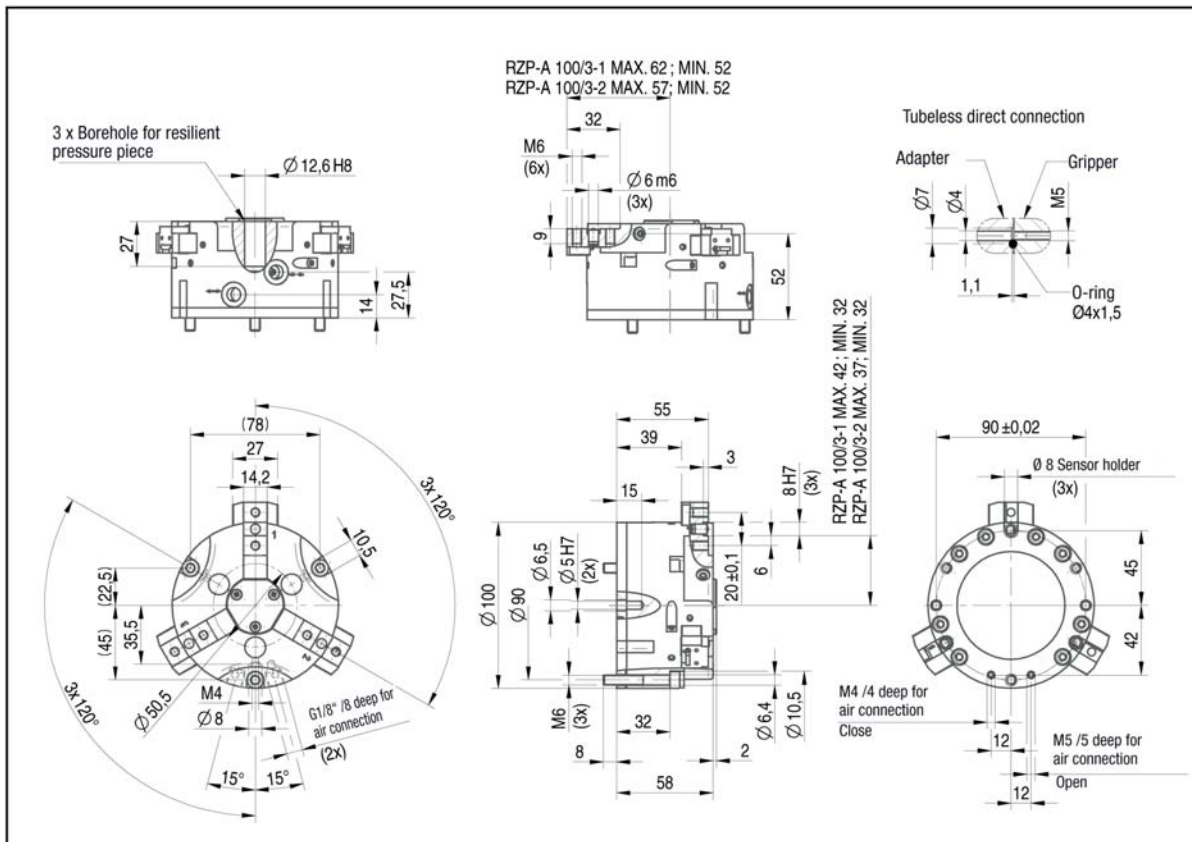
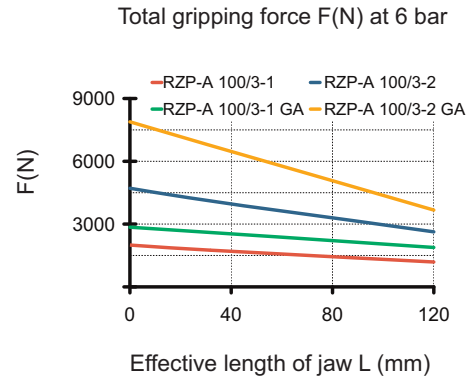
Item No.	434891 ▲	434892 ▲	434900 ▲	434840 ▲	434839 ▲	434901 ▲
Design	RZP-A 100/3-1	RZP-A 100/3-2	RZP-A 100/3-1 GA	RZP-A 100/3-2 GA	RZP-A 100/3-1 GI	RZP-A 100/3-2 GI
Gripping force at 6 bar N	2000	4000	2500	5000	2650	5100
Stroke per jaw mm	10	5	10	5	10	5
Gripping force maintained N	-	-	500	1000	500	1000
Recommended workpiece weight kg	10	20	10	20	10	20
Weight kg	1,3	1,3	1,9	1,9	1,9	1,9
Height mm	58	58	78	78	78	78
Ø mm	100	100	100	100	100	100
Mx Nm	45	45	45	45	45	45
My Nm	95	95	95	95	95	95
Mz Nm	45	45	45	45	45	45
Fz N	2300	2300	2300	2300	2300	2300
Operating pressure min./max. without GA/GI bar	2-8	2-8	-	-	-	-
Operating pressure min./max. with GA/GI bar	-	-	4-7	4-7	4-7	4-7
Clamping time s	0,1	0,1	0,1	0,1	0,2	0,2
Opening time s	0,1	0,1	0,2	0,2	0,1	0,1
Air consumption per cycle cm ³	120	120	120	120	120	120
Max. allowable length of jaw mm	100	100	100	100	100	100

RZP-A 100

Max. load on gripper and jaw



Clamping force diagram exterior gripping



3-jaw centric gripper
RZP-A



3-jaw centric gripper

RZP-A 125



APPLICATION

Universal gripping of round and cylindrical workpieces with three centrally arranged gripper fingers for handling with robots or portals.

TYPE

Available from sizes 64 to 160, each in two stroke variants. Optionally with gripping force safety device and/or dirt cover.
Fastening of the gripper fingers via centering sleeves (included in the scope of delivery).

CUSTOMER BENEFITS

- ⊕ High gripping force with low dead weight and compact design
- ⊕ Maximum flexibility thanks to versatile connection and fastening options
- ⊕ Long service life and high reliability thanks to specially ground base jaws in proven T-slot guide

TECHNICAL FEATURES

- Centrally clamping in compact design made of high-strength, hard-coated aluminium alloy
- All functional parts made of hardened steel for maximum service life
- Wedge hook principle with pneumatic actuation
- Optional inductive and magnetic position sensors
- Optionally available with FKM seals for higher temperatures up to 150°C (on request)
- Integrable purge air connection to prevent contamination



C40

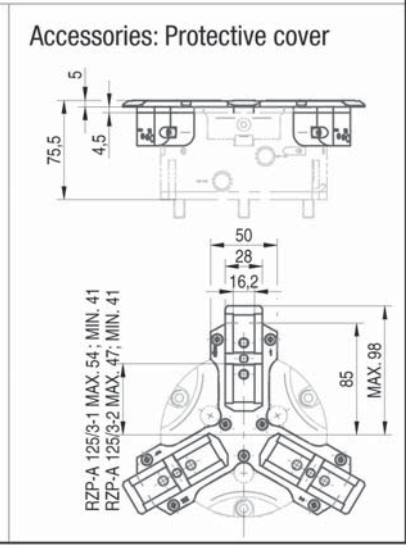
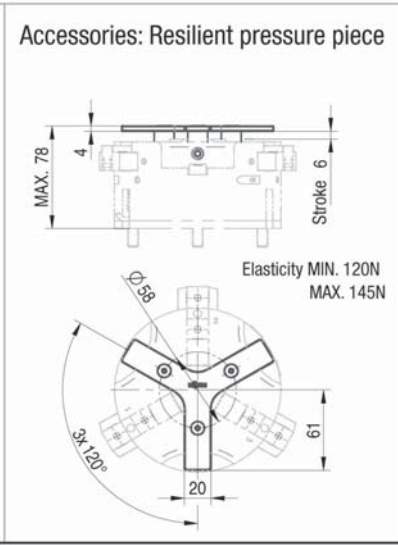
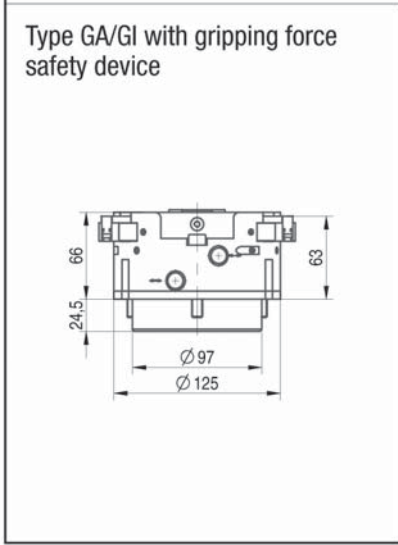
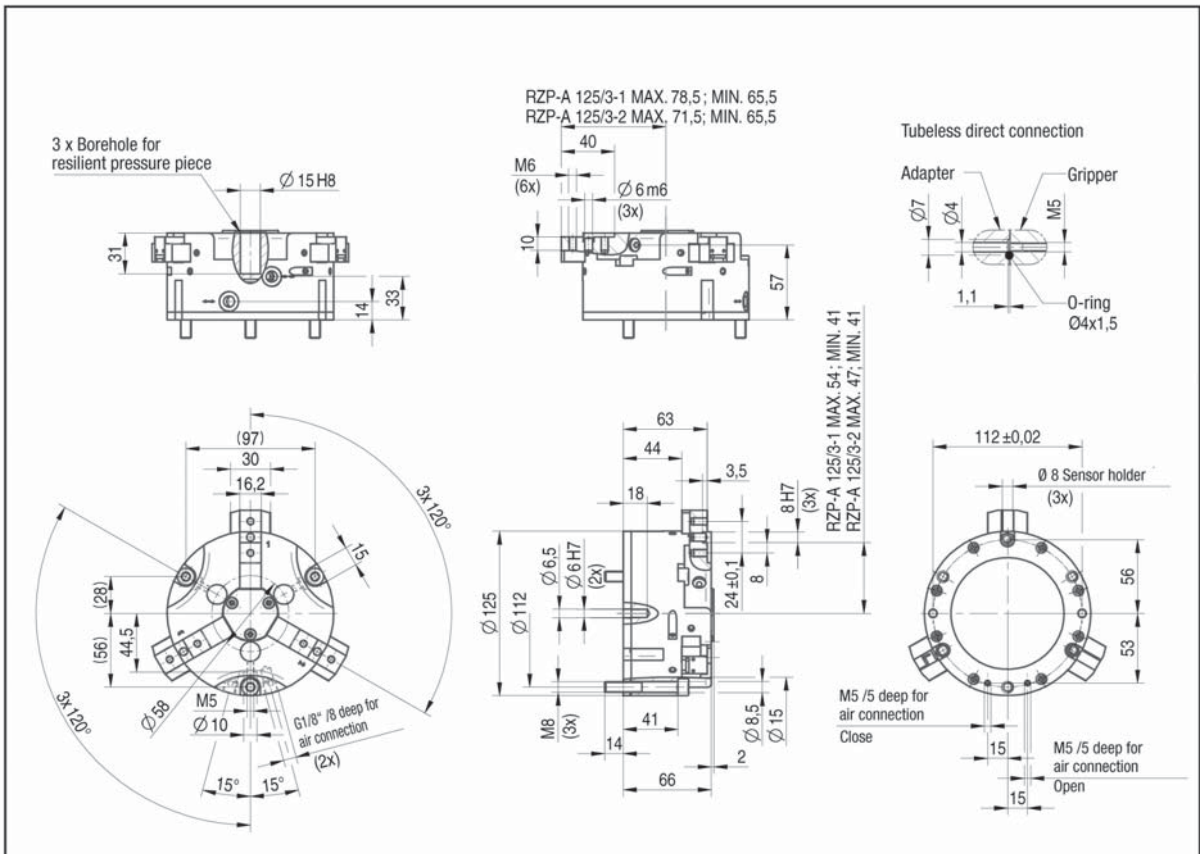
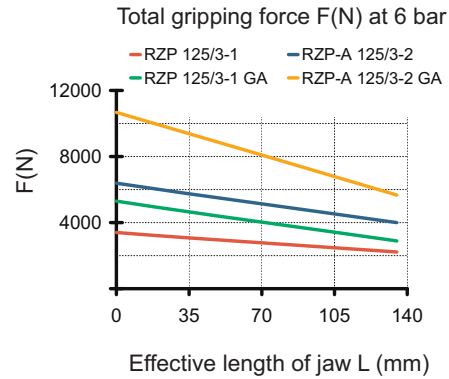
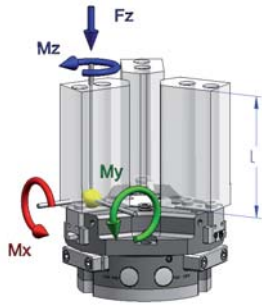
RZP-A 125 - 3-jaw centric gripper air operated with tongue and groove

Item No.	434841 ▲	434902 ▲	434842 ▲	434914 ▲	434843 ▲	434915 ▲
Design	RZP-A 125/3-1	RZP-A 125/3-2	RZP-A 125/3-1 GA	RZP-A 125/3-2 GA	RZP-A 125/3-1 GI	RZP-A 125/3-2 GI
Gripping force at 6 bar N	3300	6500	4200	8100	4300	8300
Stroke per jaw mm	13	6	13	6	13	6
Gripping force maintained N	-	-	900	1600	800	1600
Recommended workpiece weight kg	16	32	16	32	16	32
Weight kg	2,3	2,3	3,4	3,4	3,4	3,4
Height mm	66	66	80,5	80,5	80,5	80,5
Ø mm	125	125	125	125	125	125
Mx Nm	60	60	60	60	60	60
My Nm	100	100	100	100	100	100
Mz Nm	70	70	70	70	70	70
Fz N	2500	2500	2500	2500	2500	2500
Operating pressure min./max. without GA/GI bar	2-8	2-8	-	-	-	-
Operating pressure min./max. with GA/GI bar	-	-	4-7	4-7	4-7	4-7
Clamping time s	0,2	0,2	0,15	0,15	0,35	0,35
Opening time s	0,2	0,2	0,35	0,35	0,15	0,15
Air consumption per cycle cm ³	230	230	230	230	230	230
Max. allowable length of jaw mm	125	125	125	125	125	125

RZP-A 125

Max. load on gripper and jaw

Clamping force diagram exterior gripping



3-jaw centric gripper
RZP-A



3-jaw centric gripper

RZP-A 160



APPLICATION

Universal gripping of round and cylindrical workpieces with three centrally arranged gripper fingers for handling with robots or portals.

TYPE

Available from sizes 64 to 160, each in two stroke variants. Optionally with gripping force safety device and/or dirt cover.
Fastening of the gripper fingers via centering sleeves (included in the scope of delivery).

CUSTOMER BENEFITS

- ② High gripping force with low dead weight and compact design
- ② Maximum flexibility thanks to versatile connection and fastening options
- ② Long service life and high reliability thanks to specially ground base jaws in proven T-slot guide

TECHNICAL FEATURES

- Centrally clamping in compact design made of high-strength, hard-coated aluminium alloy
- All functional parts made of hardened steel for maximum service life
- Wedge hook principle with pneumatic actuation
- Optional inductive and magnetic position sensors
- Optionally available with FKM seals for higher temperatures up to 150°C (on request)
- Integrable purge air connection to prevent contamination



C40

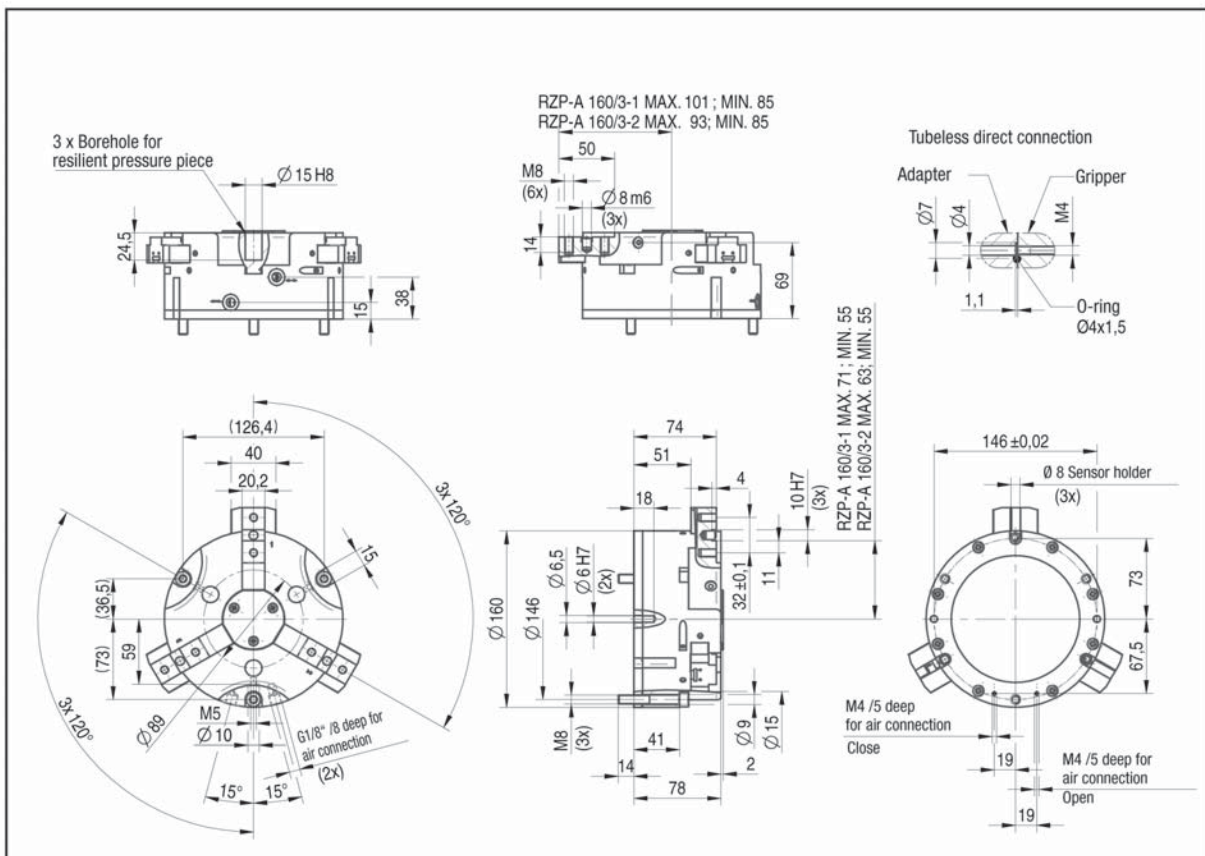
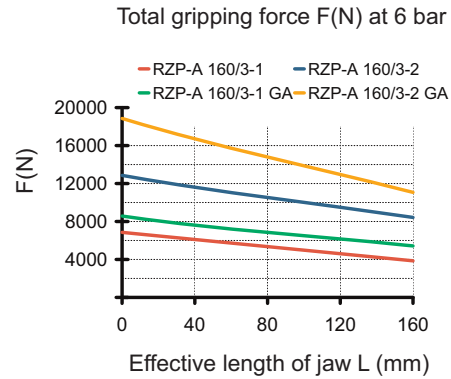
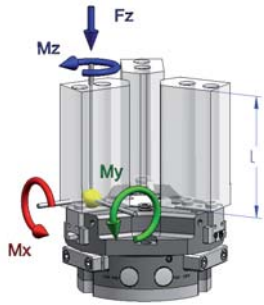
RZP-A 160 - 3-jaw centric gripper air operated with tongue and groove

Item No.	435045 ▲	435046 ▲	435055 ▲	435056 ▲	435057 ▲	435058 ▲
Design	RZP-A 160/3-1	RZP-A 160/3-2	RZP-A 160/3-1 GA	RZP-A 160/3-2 GA	RZP-A 160/3-1 GI	RZP-A 160/3-2 GI
Gripping force at 6 bar N	6000	12000	8000	16000	8500	16500
Stroke per jaw mm	16	8	16	8	16	8
Gripping force maintained N	-	-	2000	4000	2000	4000
Recommended workpiece weight kg	30	60	30	60	30	60
Weight kg	4,5	4,5	6,6	6,6	6,6	6,6
Height mm	78	78	108	108	108	108
Ø mm	160	160	160	160	160	160
Mx Nm	80	80	80	80	80	80
My Nm	100	100	100	100	100	100
Mz Nm	80	80	80	80	80	80
Fz N	2800	2800	2800	2800	2800	2800
Operating pressure min./max. without GA/GI bar	2-8	2-8	-	-	-	-
Operating pressure min./max. with GA/GI bar	-	-	4-7	4-7	4-7	4-7
Clamping time s	0,4	0,4	0,4	0,4	0,8	0,8
Opening time s	0,4	0,4	0,8	0,8	0,4	0,4
Air consumption per cycle cm ³	520	520	520	520	520	520
Max. allowable length of jaw mm	160	160	160	160	160	160

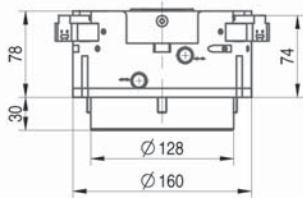
RZP-A 160

Max. load on gripper and jaw

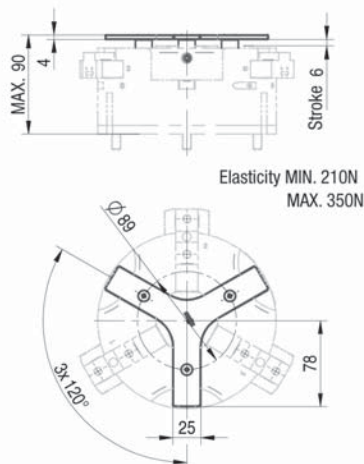
Clamping force diagram exterior gripping



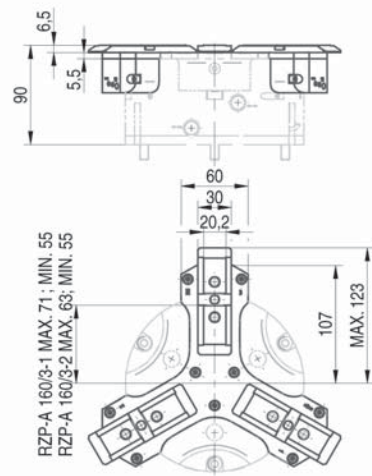
Type GA/GI with gripping force safety device



Accessories: Resilient pressure piece



Accessories: Protective cover





3-jaw centric gripper

Accessories RZP-A

Jaw blank - steel (including fixing screws)
3-jaw set



Item no.	Number of jaws	Design	For
170825 ▲	3	steel	RZP-A 64
170826 ▲	3	steel	RZP-A 80
170827 ▲	3	steel	RZP-A 100
170828 ▲	3	steel	RZP-A 125
170829 ▲	3	steel	RZP-A 160

Jaw blank - aluminium (including fixing screws)
3-jaw set



Item no.	Number of jaws	Design	For
170835 ▲	3	aluminium	RZP-A 64
170836 ▲	3	aluminium	RZP-A 80
170837 ▲	3	aluminium	RZP-A 100
170838 ▲	3	aluminium	RZP-A 125
170839 ▲	3	aluminium	RZP-A 160

Resilient pressure piece



Item no.	For
165573 ▲	RZP-A 64
170868 ▲	RZP-A 80
170870 ▲	RZP-A 100
170871 ▲	RZP-A 125
170872 ▲	RZP-A 160

Pressure maintenance
for double acting gripper (G1/8)



Item no.
1078823

Compressed air connection - L-Plug connector



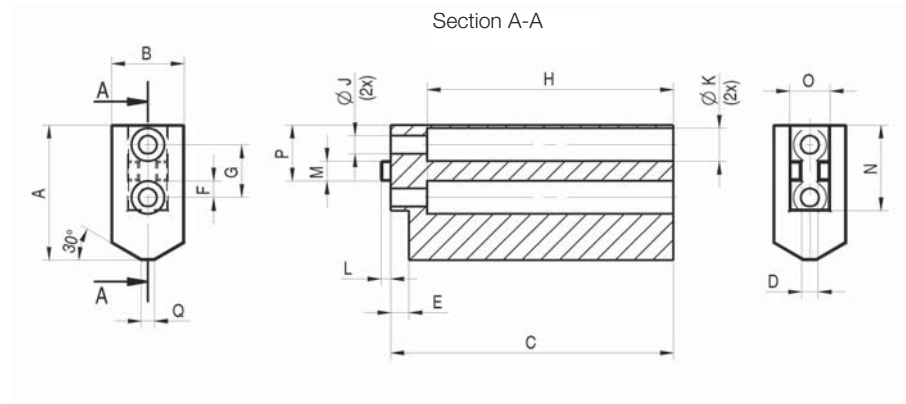
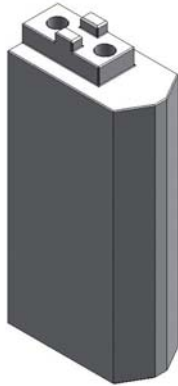
Item no.	Design	For
802539	L-Plug connector M5 - 6 mm	RPP-50 / RPP-64 / RPP-80
477025	L-Plug connector 1/8 - 6 mm	RPP-100 - RPP-240

Proximity switch



Item no.	Size (diameter/ length)	Design	For
229114	M8x1x30,5	5 m cable, open leads	RZP-A 64/ RZP-A-160

Accessories RZP-A



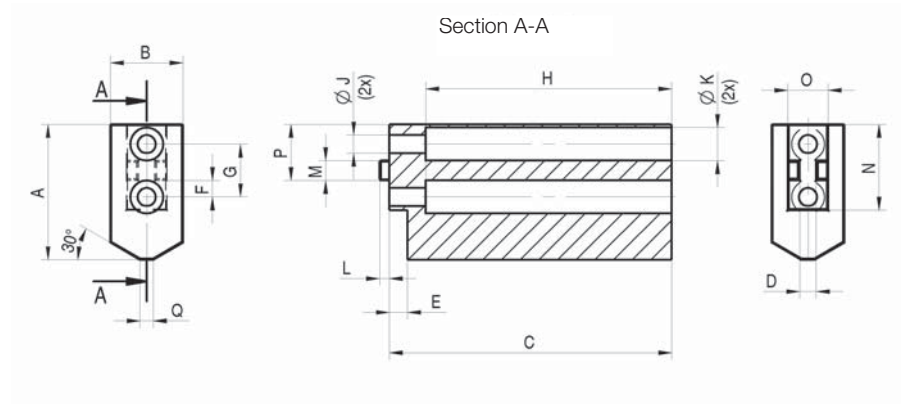
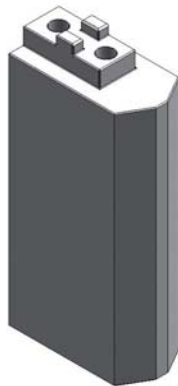
Jaw blank - steel (including fixing screws)

RPP-A / RZP-A Jaw blank - steel	64	80	100	125	160
RPP-A - 2-jaw set	170675	170676	170677	170678	170679
RZP-A - 3-jaw set	170825	170826	170827	170828	170829
A	32	41	51	60	80
B	20	22	30	35	40
C	68,5	85,5	105,5	130,5	166,5
D +0,01/+0,03	4	5	6	6	8
E+0,2	4,5	5,5	5,5	5,5	6,5
F±0,1	4	5	6	8	11
G±0,1	13	16	20	24	32
H	59,5	74,5	94,5	119,5	153,5
J	4,5	5,5	6,6	6,6	9
K	8	10	11	11	15
L	2,5	3	3	3,5	4
Mf7	5	6	8	8	10
N-0,3/-0,5	21	26	33	41	51
O-0,3/-0,5	10,2	12,2	14,2	16,2	20,2
P+0,1	14	17	21	25,5	31
Q	3	4	5	6	8
Weight per jaw kg	0,26	0,46	1,0	1,8	3,5



3-jaw centric gripper

Accessories RZP-A



Jaw blank - aluminium (including fixing screws)

	64	80	100	125	160
RPP-A / RZP-A Jaw blank - aluminium					
RPP-A - 2-jaw set	170685	170686	170687	170688	170689
RZP-A - 3-jaw set	170835	170836	170837	170838	170839
A	32	41	51	60	80
B	20	22	30	35	40
C	68,5	85,5	105,5	130,5	166,5
D +0,01/+0,03	4	5	6	6	8
E+0,2	4,5	5,5	5,5	5,5	6,5
F±0,1	4	5	6	8	11
G±0,1	13	16	20	24	32
H	59,5	74,5	94,5	119,5	153,5
J	4,5	5,5	6,6	6,6	9
K	8	10	11	11	15
L	2,5	3	3	3,5	4
Mf7	5	6	8	8	10
N-0,3/-0,5	21	26	33	41	51
O-0,3/-0,5	10,2	12,2	14,2	16,2	20,2
P+0,1	14	17	21	25,5	31
Q	3	4	5	6	8
Weight per jaw kg	0,1	0,16	0,35	0,62	1,2

Accessories RZP-A



Notes

Notes